



## Updates & Look Ahead

This is an update on light rail construction and private utility relocations. HRT manages the light rail construction only (Skanska) and City of Norfolk coordinates and manages all private utility relocations.

This schedule may change without notice to accommodate utility relocations, which must be completed before light rail construction can begin.

### West York Street

- **Skanska**
  - Verizon's work is completed
  - Curb and gutter installation should start this week
    - Sidewalk installation will follow
      - Slight delay waiting for bricks for sidewalks as this was a change to the contract
        - There will be approximately 4 days of limited access to properties that have driveway aprons. Alternate parking will be coordinated directly with property owner

### Brambleton Avenue : Yarmouth Street to Brambleton Bridge (Skanska)

- Work can start at any time
- Closure of north, westbound lane of Brambleton Avenue, from Yarmouth Street to the Brambleton Bridge, to adjust and replace sidewalk, curb and gutters
  - Work completed in two phases to maintain access to Hague Medical Building
  - Elizabeth River Trail re-routed

### York Street (Yarmouth to Duke)

- **Skanska**
- Installation of water line and storm drain is underway
  - Curb and gutter work on the north side of the street will follow
  - Work will move to the south side of the street and include installation of the track

### Duke /Bute Street (DVP)

- Dominion Virginia Power's relocation efforts along Duke/Bute Streets have progressed into the Duke/Bute intersection
  - Full closure of the intersection extends west of the intersection
    - Traffic detoured to the Botetourt/York Street intersection
    - Pedestrian access will be maintained, with the specifics finalized once the limits of construction are established.
    - On street parking will be removed in the construction area
  - Partial closure of the Duke/York intersection
    - From Duke Street
      - No turns west onto York Street
      - Turns east on to York Street to access Residence Inn and York Street parking garage
    - From York Street (east of Duke Street)
      - No turns south onto Duke Street

### **Monticello Avenue: City Hall to Market Street (Skanska)**

- Upon completion of the installation of the water line, Skanska will repave the northbound lane on the east side of Monticello and prepare to start the next phase of light rail construction, at which time Monticello Avenue will become one-way, Northbound
  - Next phase will be further broken down into stages
    - City Hall Avenue to Market Street
    - Market Street to Freemason Street
    - Freemason Street to Charlotte Street
- Installation of OCS foundations started over the weekend

### **Atlantic Street (HRSD)**

- Full closure of Atlantic Street, from Plume Street to just south of the entrance to City Center parking garage. Work will continue for approximately 2 more weeks
  - Two-way traffic via City Hall Avenue will maintain access to City Center parking garage
  - Traffic control by Norfolk Police Department may be provided at City Hall/Atlantic Street intersection from 4:30-6:30 p.m.
  - Sidewalk on east side of Atlantic Street will be closed
  - No on-street parking on Atlantic Street (between City Hall and Plume)

### **Kirn Library Demo**

- Exterior abatement to continue through the end of June
- Demolition of the building is anticipated to start the week of July 6
  - **Contractor does not anticipate lane closures past parking lanes**
  - Work hours will be at least 12 hours a day, starting at 7 a.m.
  - Sidewalk closures on Plume, Bank, Atlantic, and City Hall are possible as limits of demolition necessary for pedestrian safety are established
  - Parking
    - North side parking lane closed on Plume Street
    - Parking will be removed on Atlantic Street
    - Parking may be removed on Bank Street
      - Event bus parking for MacArthur Memorial to remain on Bank Street with City Hall as backup
  - Debris will be removed from the site using tractor trailers
    - Atlantic to City Hall
  - Most of the loading of debris will be contained on-site. There may be a few days when debris loading occurs in a closed lane

### **Plume Street (Skanska)**

Skanska will begin light rail construction on Plume Street this week—two-way traffic will be maintained until HRSD completes their work in the St. Paul's/Plume Street intersection at which time traffic flow will become one-way westbound.

- Pedestrian flow
  - Pedestrians will be detoured to the north side of Plume Street
- Parking
  - On street parking will be removed to accommodate two-way traffic

### **Plume Street (DVP)**

Dominion Virginia Power has extensive relocations that must be done on Plume Street. Plans that are currently in development show DVP starting their work at the Plume/Atlantic Street intersection and working east toward St. Paul's Blvd.

- DVP can not start their work until HRSD completes their relocations on Plume Street. It is important to note that DVP's work will be happen on the north side of the street at the same time as Skanska's work on the south side of the street.
- Plume Street will remain one-way, westbound during this work.
- Parking
  - On Street parking north side of Plume Street will be removed when DVP's work begins

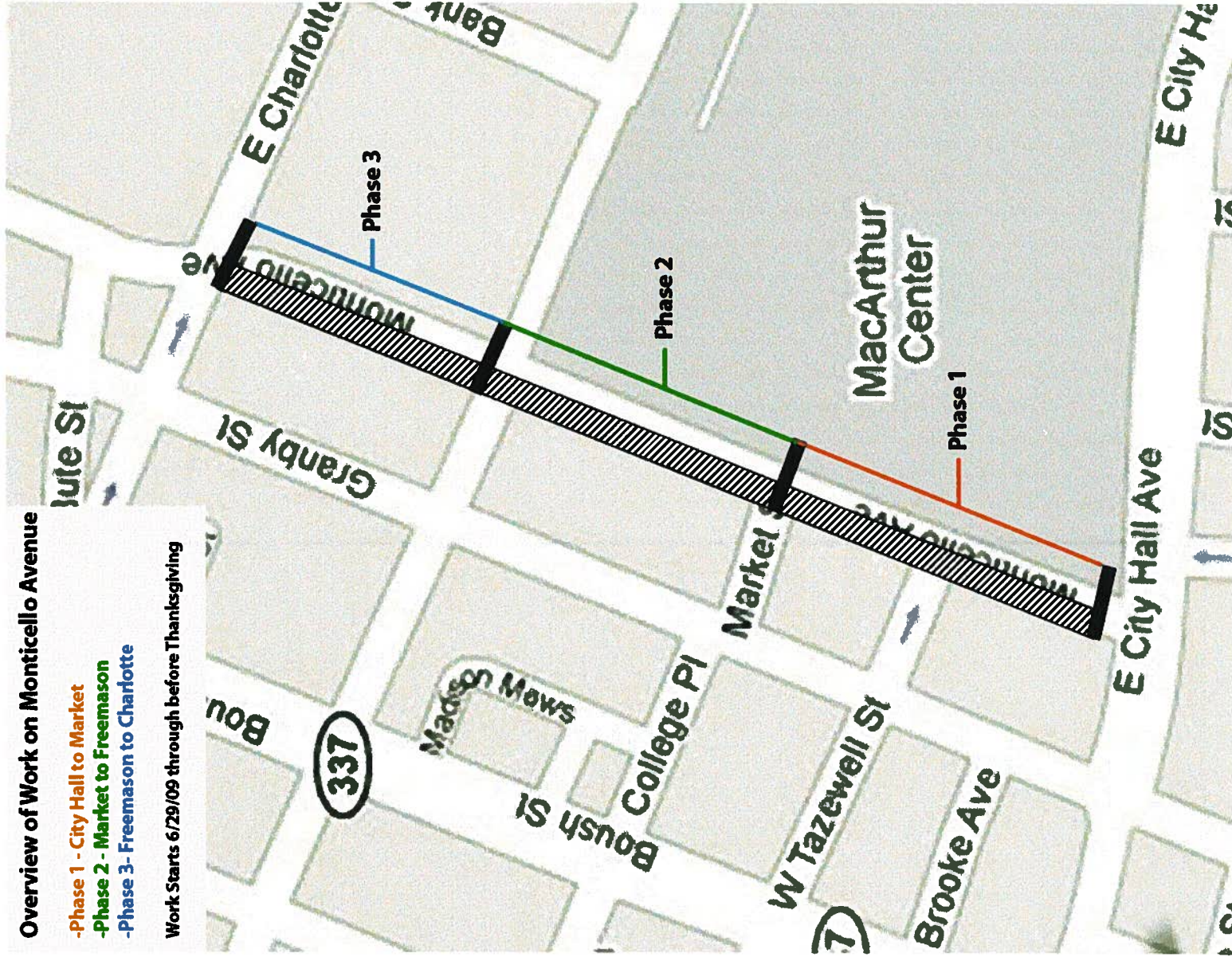
### **Saint Pauls Blvd. (HRSD)**

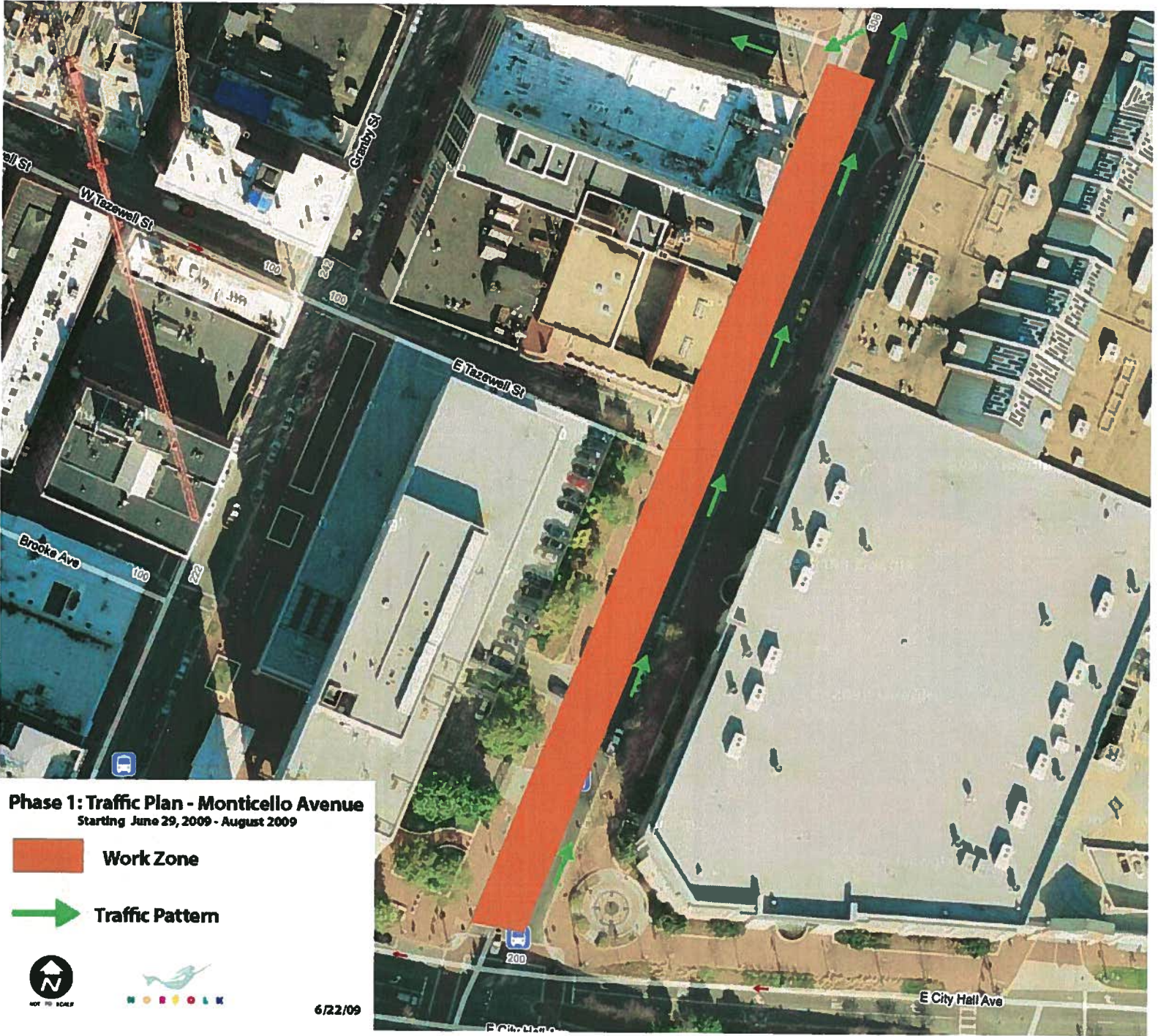
- Traffic flow
  - Intersection of St. Paul's Blvd. and Plume Street will close for approximately 7 days
    - The length of closure has been extended additional days
  - Southbound St. Pauls Blvd
    - Two southbound lanes close
      - Middle lane closed daily from 9 a.m. through 3:30 p.m.
      - One southbound lane, on the west side of the street remains closed
- Pedestrian flow
  - Sidewalk on the west side of St. Paul's Blvd. will close between City Hall Avenue and Main Street
    - Detour route is being prepared on east side of St. Paul's Blvd.
  - Pedestrian crosswalks will be maintained but crosswalk locations will change according to the work being done

## Overview of Work on Monticello Avenue

- Phase 1 - City Hall to Market
- Phase 2 - Market to Freemason
- Phase 3- Freemason to Charlotte

Work Starts 6/29/09 through before Thanksgiving





**Phase 1: Traffic Plan - Monticello Avenue**  
 Starting June 29, 2009 - August 2009

-  **Work Zone**
-  **Traffic Pattern**



NOT TO SCALE



6/22/09

**Downtown Construction Update**  
**June 22-29**

**Freemason Area**



**Completed**

- **Duke Street-** Water and Sewer installed from Bute Street to Brambleton Avenue
- **Yarmouth Street (Brambleton to Freemason Mews)-** Water main installed
- **Yarmouth Street (Brambleton to Freemason Intersection)-** Sewer installed
- **Bute Street-** Water and Sewer installed from Dunmore Street to Duke Street
- **York Street-** Botetourt Intersection, water and sewer installation is complete
  - Water and Sewer installed from Dunmore Street to the NOAA property
  - Sewer installation complete in the 200 block
- **Dunmore Street-** Water and Sewer installed from York Street to Bute Street
- **Yarmouth Street/ Freemason Street Intersection-** Water and Sewer installation Complete
- **Freemason Street-** Water main installed

**Ongoing**

**Yarmouth Street**

- Construction continues south of Freemason Mews proceeding to College Place
  - Expect 2-3 months for completion

**Freemason Street**

- Sewer installation continues to progress
  - Expect 2-3 months for completion

**What's Next**

**Freemason Street**

- Final phase will be to re-install cobblestones